



City of Sarasota Emergency Management: Hurricane Preparedness

May 2, 2026

Presented by:

Rachel Ingle, CEM – Emergency Mgmt

Todd Kucharski – Public Works

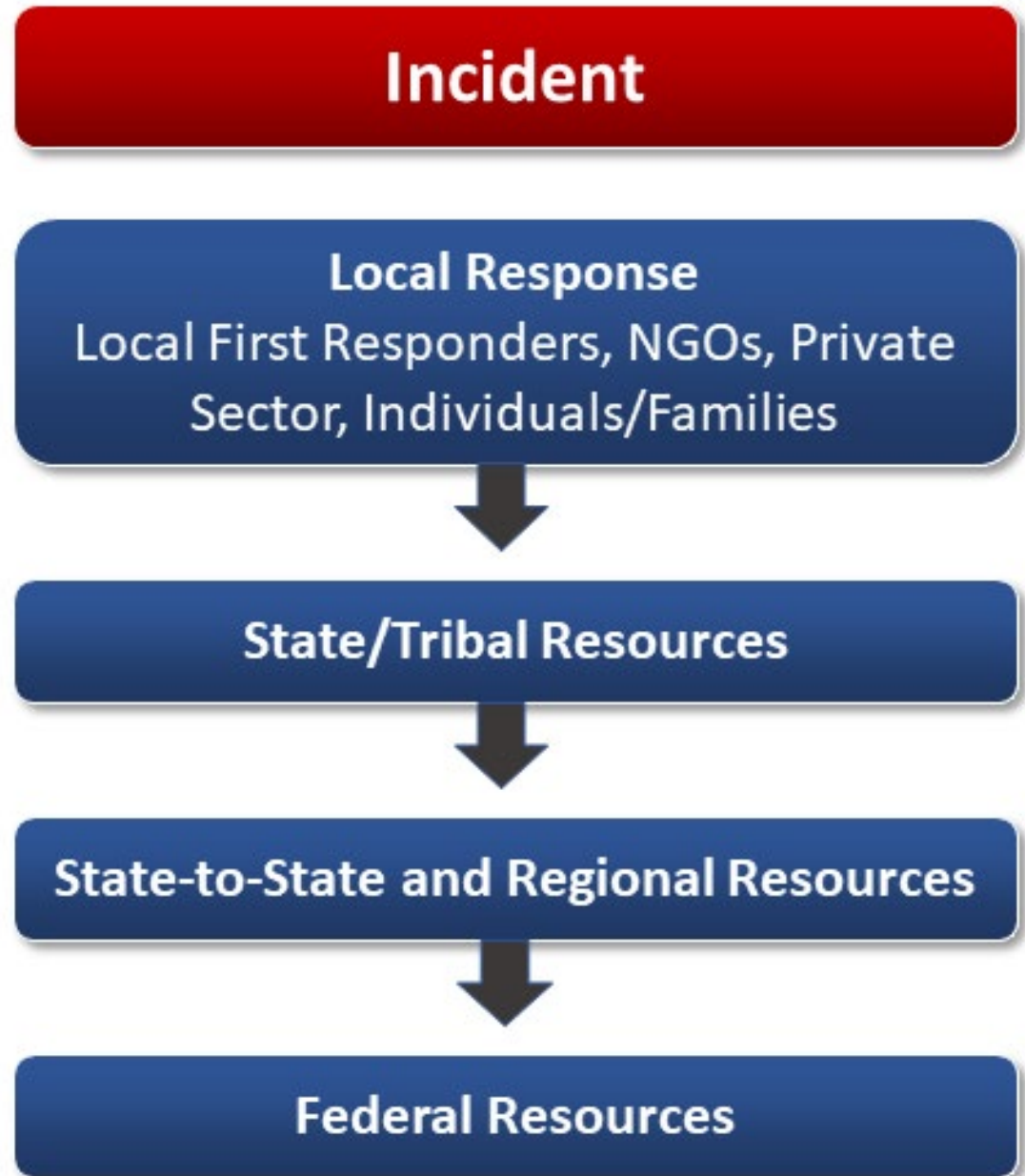


CITY OF SARASOTA and SARASOTA COUNTY EMERGENCY OPERATIONS CENTERS (EOCs)





Emergency Tiered Approach



- **Division of Emergency Management (FDEM)**

- Disaster declarations, FEMA liaison
- Resource augmentation & mutual aid

- **Department of Health**

- Medically Dependent Evac Centers
- Public Health

- **Department of Transportation**

- State roads and bridges

- **Division of Law Enforcement**

- Law enforcement resources

- **Dept of Children and Families**

- Disaster food assistance

- **Department of Military Affairs**

- Florida National Guard

- **Department of Commerce**

- Economic recovery resources

- **Fish and Wildlife Commission**

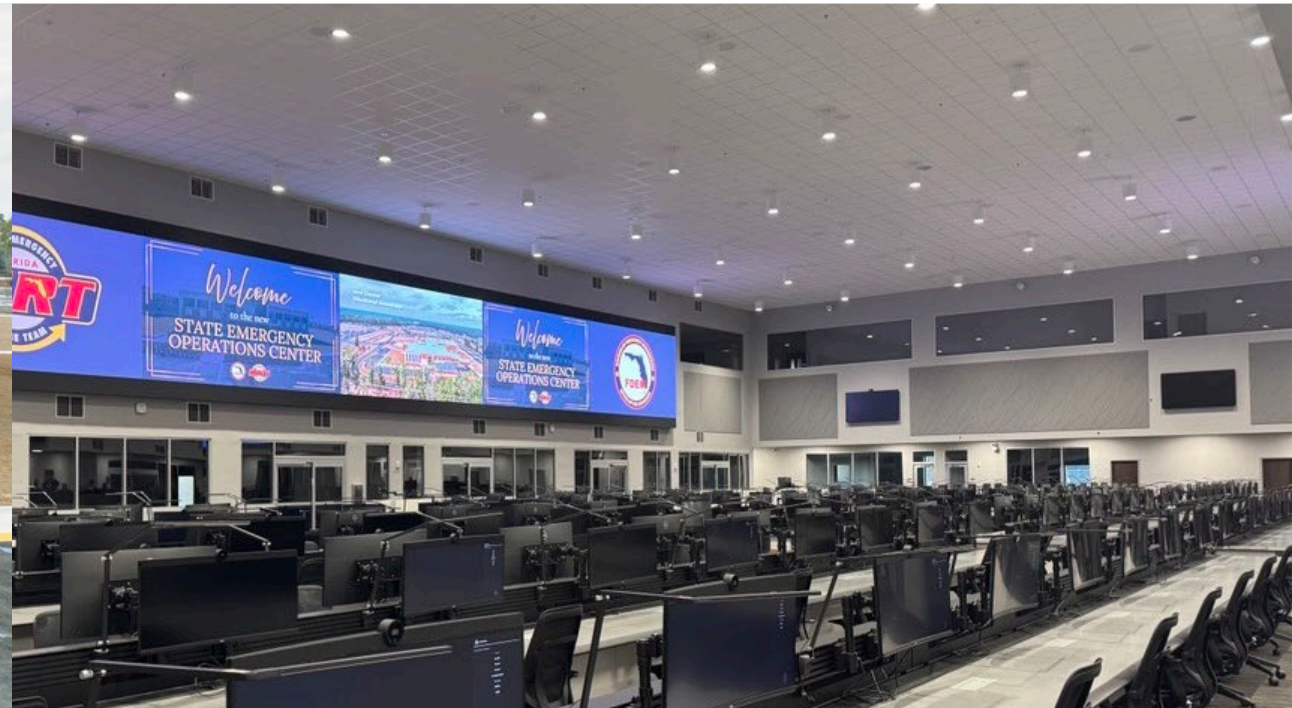
- Marine response, evacuation support

- **Department of Agriculture & Consumer Services**

- Animal and agriculture issues



State of Florida Emergency Operations Center

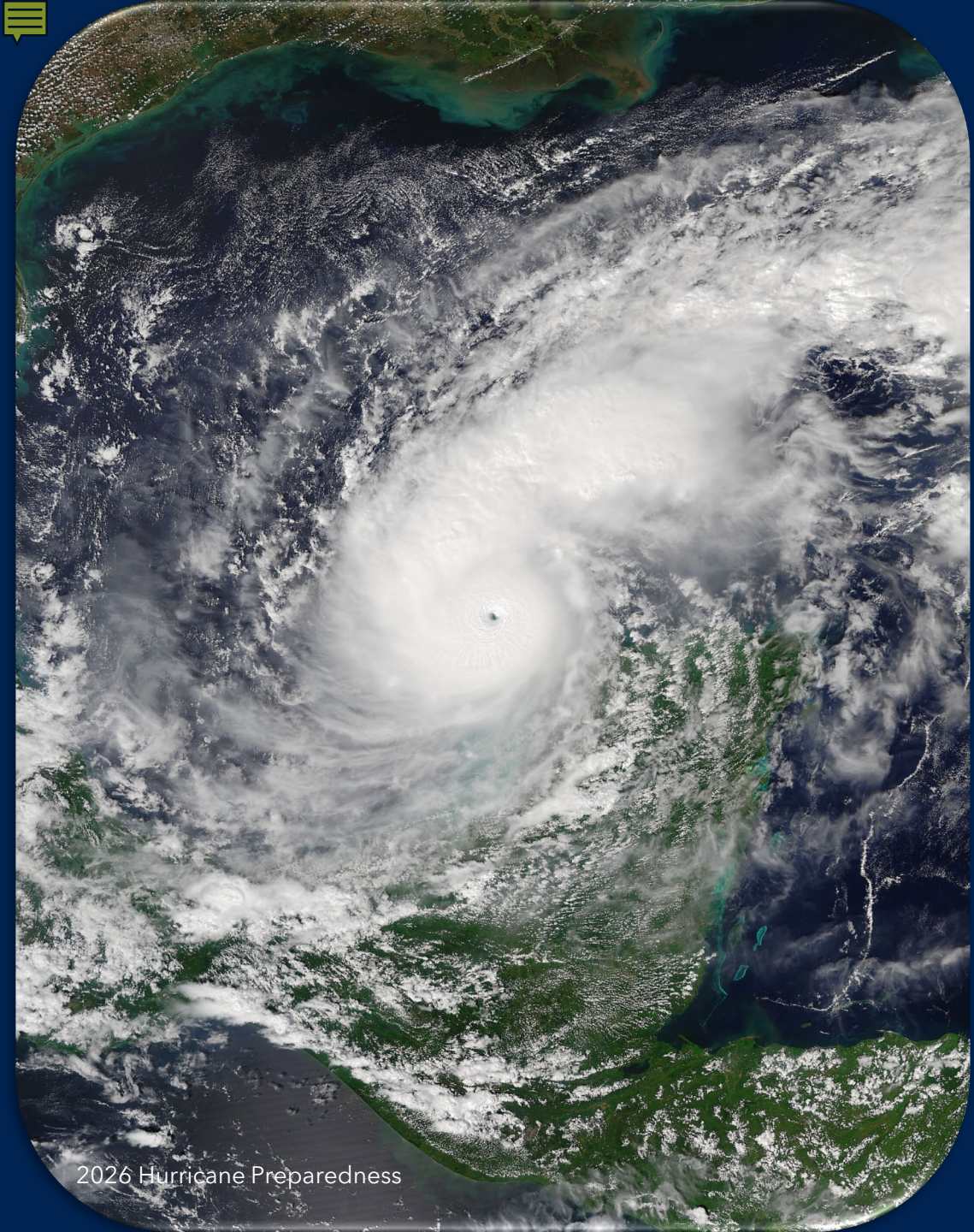


National Hurricane Center



Mission:

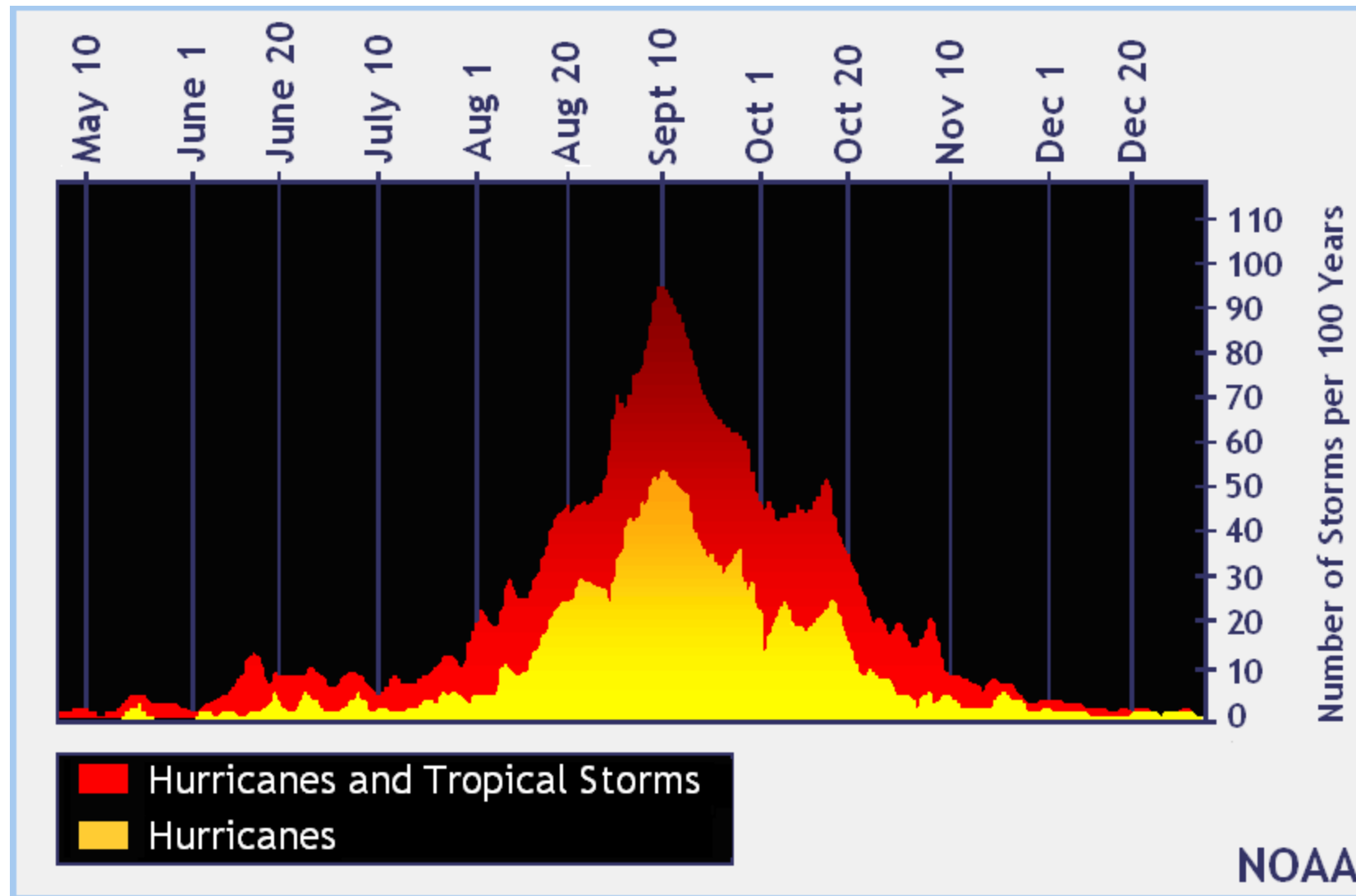
Save lives, mitigate property loss, and improve economic efficiency by issuing the best watches, warnings, and forecasts of hazardous tropical weather and by increasing understanding of these hazards



Tropical Cyclone Terminology

- **Tropical Depression**
 - Max sustained winds less than 38 MPH
- **Tropical Storm**
 - Sustained winds 39-73 MPH
- **Hurricane**
 - Sustained winds 74+ MPH
- **Major Hurricane**
 - Sustained winds 111 MPH+ (Category 3+)

Hurricane Season June 1- Nov 30



2025 Atlantic Basin Hurricane Season Recap:



2025 Atlantic Tropical Cyclone Names

Andrea	Humberto	Olga
Barry	Imelda	Pablo
Chantal	Jerry	Rebekah
Dexter	Karen	Sebastien
Erin	Lorenzo	Tanya
Fernand	Melissa	Van
Gabrielle	Nestor	Wendy

Be prepared: Visit hurricanes.gov and follow NOAA's @NWS and @NHC_Atlantic on X November 2025

- **No landfalling hurricanes in the US**
- **13 Named Storms**
 - 5 Hurricanes
 - 4 Major Hurricanes (111+ MPH Winds)
 - 3 Category 5: 2nd most on record in a season
- **National Hurricane Center incorporated artificial intelligence guidance into forecasts**

EMERGENCY SERVICES

Local Mitigation Strategy

Community Conversations: Hurricane Preparedness

Hurricane Preparedness

Homeowners

Pets and Farm Animals

Medical Needs Program

Business Owners

What's My Risk?

Storm Surge

After the Storm

Helpful Resources

Active Emergency Ordinances

Emergency Management

Fire Department

EMS Homelessness Incidents

911 Reports

Know Your Evacuation Level

Lifeguard Operations

Public Safety Communications

Alert Sarasota County

Emergency Services Documents, Forms

Government » Emergency Services »

Hurricane Preparedness

Print Share & Bookmark Font Size: + -

Emergency Preparedness Guides

2025 Emergency Preparedness Guides

Alert Sarasota County

Opt-in for Alert Subscriptions

Know Your Level

Know Your Evacuation Level

What's My Risk

Consider the Risks You Face

Evacuation Centers

Evacuation Center Locations

Storm Surge

Homeowners

Resources for Preparing Your Home

Business Owners

Resources for Business Owners

Medical Dependent

Learn More About the Program

Pets and Farm Animals

Prepare Your Animals

Transportation Plan

Transportation to Evacuation Centers

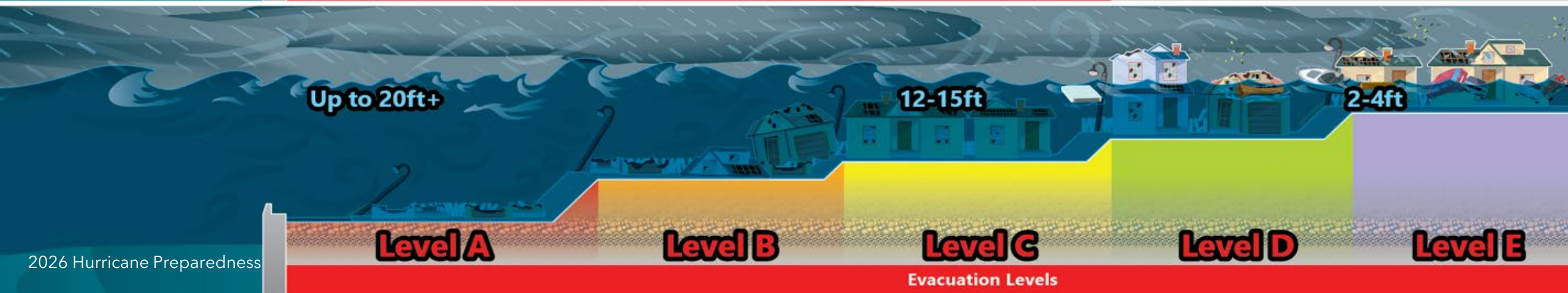
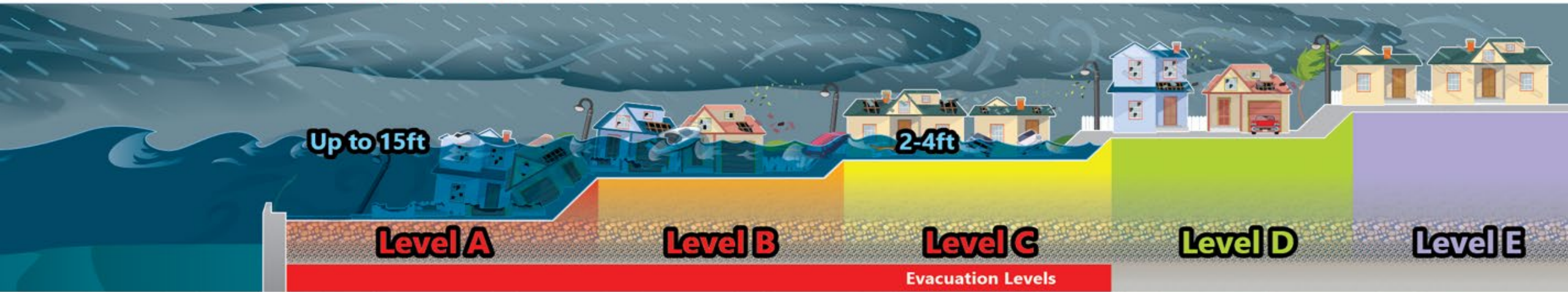
Disaster Supply Checklist

Be Prepared



Know Your Evacuation Level

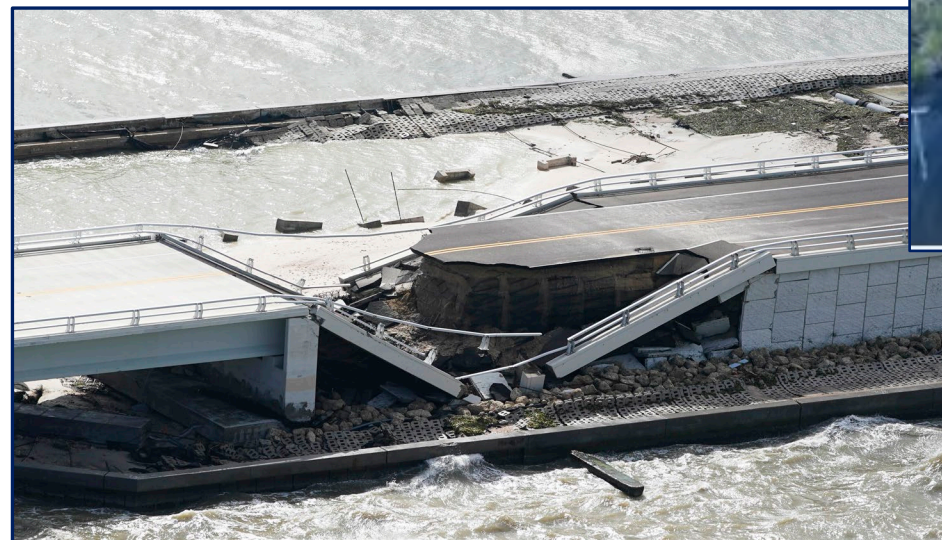
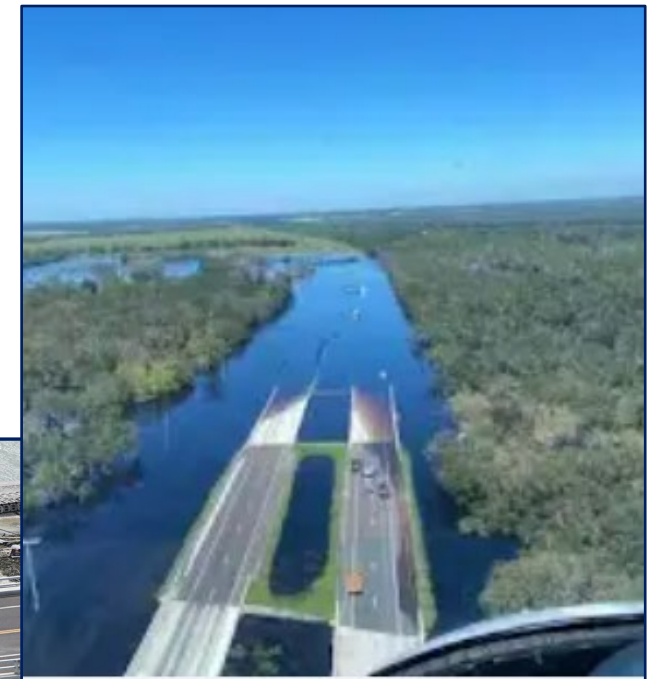
SARASOTA COUNTY STORM SURGE



Evacuation Timing Estimates

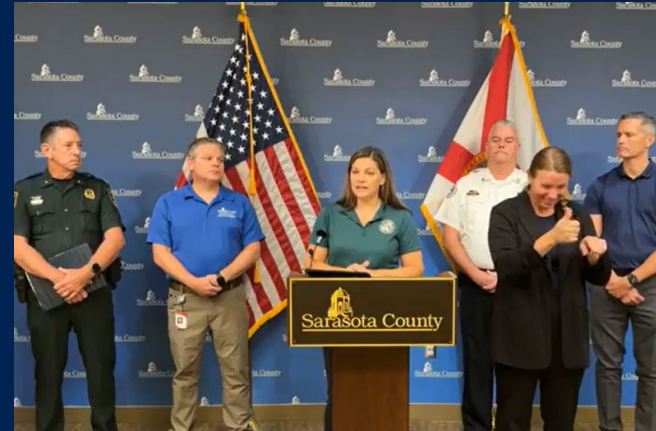


- **Evacuation Timing Estimates:**
 - **A: 14 hours**
 - **B: 18 hours**
 - **C: 25 hours**
 - **D and E: 32 hours**
- **Time required for operations prior to evacuation order**
- **Post storm evacuations may be necessary**



Communicating the Message

- Press Conferences
- Alert and Warning Mechanisms
 - Integrated Public Alert and Warning System (IPAWS)
 - Local Mass Notification Systems
- Videos with Mapping
- Neighborhood First Responder Alerts
- Faith-Based and Non-Profit Partners
- Next Door/ Ring Camera
- Variable Message Boards
- Social Media
- Special Needs Call Outs



ALERT Sarasota County

Official notification system of Sarasota County

It's Time to Prepare



1. Get a Plan
2. Build a Kit
3. Stay Informed

MAKE A PET PLAN

- Make a **pet kit** – (food, water, medicines, leash, toys)
- Keep **ID tags & microchips** up to date
- Secure a **safe place to take shelter** that accepts pets
- Use **carriers/leashes** for safe transport
- **Stay calm** – pets take cues from you



FloridaDisaster.org/Pets



FloridaDisaster.org/Pets

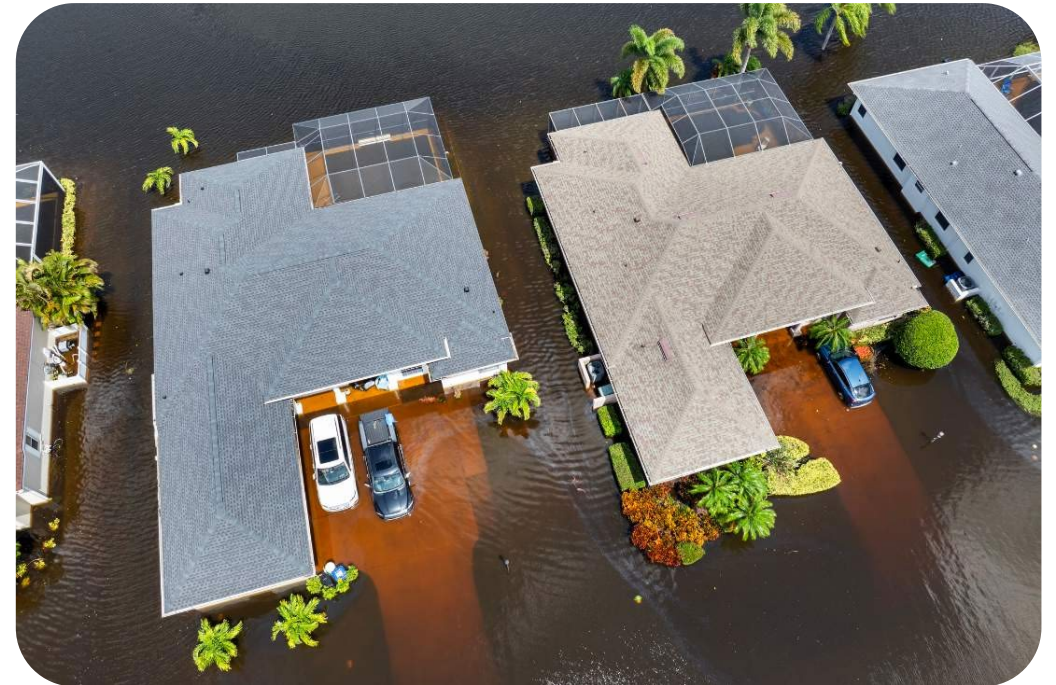


• Stay calm – pets take cues from you

Flood Insurance Is Key



- Flood coverage is important!
 - Just one inch of water can cause \$27,000+ of damage
- If it rains at your home, it can flood. **Flood insurance is critical**
- Flood policies can take up to 30 days to become effective
- Contact the National Flood Insurance Program (NFIP) at 888-379-9531
- For more information: www.floodsmart.gov



DISASTER PREPAREDNESS ESSENTIALS

**MAKE AN
EMERGENCY PLAN**



**KNOW YOUR ZONE,
KNOW YOUR HOME**



**STOCK A DISASTER
SUPPLY KIT**



**HALFWAY FULL,
HALFWAY THERE**



**UPDATE
INSURANCE**



**KNOW EVACUATION
ROUTES**



**REINFORCE
YOUR HOME**



**DOCUMENT YOUR
PROPERTY**



**GATHER
DOCUMENTS**



**SIGN UP FOR
WEATHER ALERTS**



FLORIDADISASTER.ORG/PLANPREPARE

What's Your Evacuation Plan?



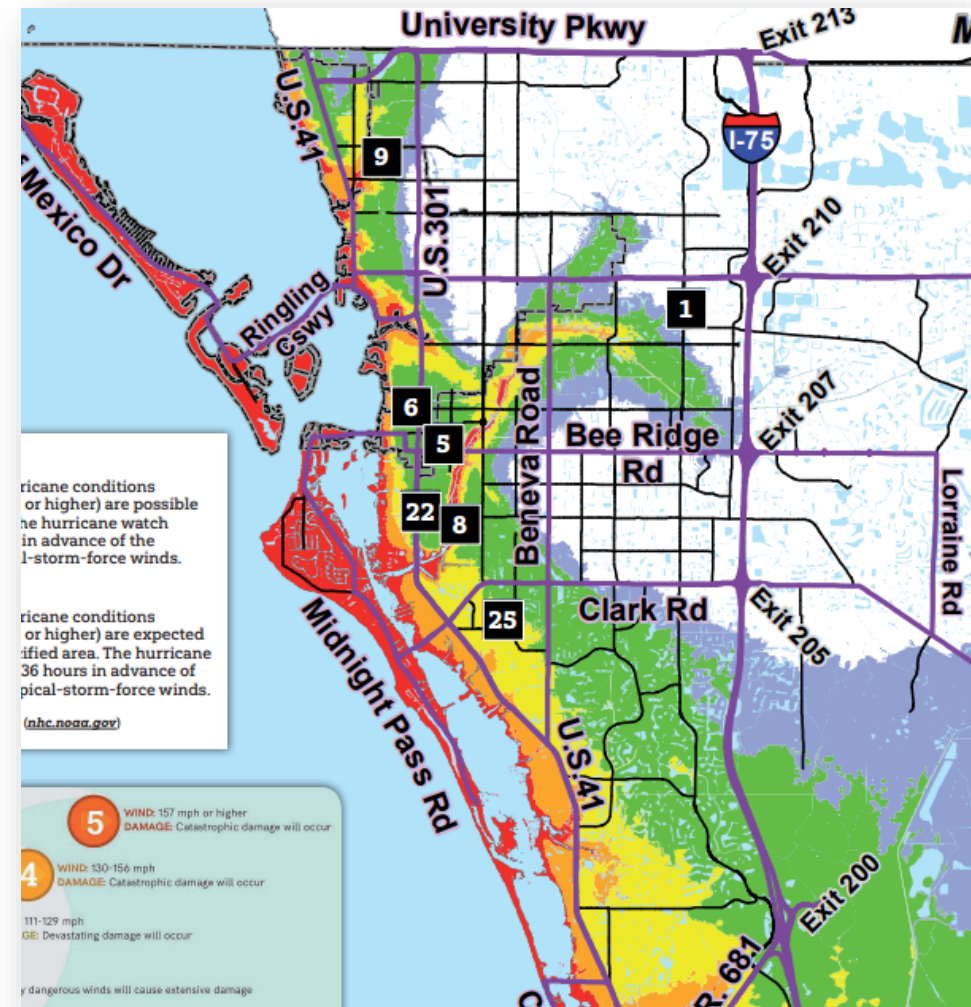
Plan A: Stay at Home

ONLY IF SAFE

Plan B: Family and friends outside evacuation levels

Plan C: Hotel

Plan D: Evacuation Center



Evacuation Center Program



- **General Population**

- No pre-registration required
- 12 locations available for every hurricane

- **Medically Dependent**

- Power and oxygen dependent
- Requires pre-registration at scgov.net/beprepared or call 311

Shelter In Place: Build a Kit



- Drinking water: 1 gallon/person and pet for 7 days
- Non-perishable food and a can opener
- Paper items
- Medications and a first aid kit
- NOAA Weather Radio
- Flashlight and extra batteries
- Cash
- Puzzles, books, games





Before You Evacuate

- Turn everything off, including circuit breakers and water shut off value
- Gas up car
- Shutter/board your home
- Turn off the power and shut off the water valve to your irrigation system.
- Bring all loose outdoor items inside the house
- Alert friends and/or family members of your plans and how they can contact you

After The Storm

- Limited emergency services
- Impassable or washed-out roads
- Power outages including traffic signals
- Treat all intersections as 4-way stop
- Damage to sewage systems, water infrastructure, and telephone/internet service
- When working on a ladder, be aware of overhead power lines – stay 10 ft away





After the Storm: Flooded Areas

- Ensure all electric appliances are turned off to prevent fires
- When resetting circuit breakers, wear dry, rubber-soled shoes and stand on something dry and non-conductive (wood)
- Use battery-powered lighting to inspect your home (e.g., flashlights)
- Don't **DRIVE, WALK, PLAY** or **STAND** in standing water



Thank You



Questions & Answers

